

INTRODUCTION

Reading: Level THREE Material will help you advance your skills to a higher level. The material in this book is designed to require you to work out some of the sections. As all reading is a process of recognition and execution, working out the fingerings, shifts, rhythms, and shapes, will allow you to begin to build your mental library of recognizable music notation. When we see a written passage that we have previously learned, we can quickly associate the task of performance with a memorized pattern of execution. This is how we become good “sight readers.”

There are many classic lines to learn in this book. There is also some unique shapes. All are good music you need to learn in your fingers. Have some fun developing your notated vocabulary.

Jim Stinnett

CONTENTS

Introduction	3
Musical Terms	6
Dynamics / Articulations	7
Practice Procedures	8
Intervalic Style	9
Buddy's Place - Duet	12
Riffs	14
Easy Day - Duet	17
Dynamics	18
Jazz Style	20
Two As One - Duet	24
Bossa Nova Style	26
Funk Style	29
Carnival - Duet	30
Contemporary Christian	36
Grinder - Duet	39
I Don't Want To Hold Your Hand - Duet	45
Intervalic Style	46
About the Author	48

Example 1

♩ = 100

1

5

Example 2

♩ = 100

1

5

Example 3

♩ = 100

1

5

9

13

This next group of examples are full of classic riffs. Lean them well as you will see them in many variations and combinations.

Example 13



Musical notation for Example 13, a bass line in 4/4 time. The tempo is marked as ♩ = 78. The key signature is natural (C major). The piece starts with a double bar line and a repeat sign. The notation includes eighth and sixteenth notes, with some beamed sixteenth notes. A first ending bracket is shown below the first measure.

Example 14



Musical notation for Example 14, a bass line in 4/4 time. The tempo is marked as ♩ = 78. The key signature has two flats (B-flat major or D-flat minor). The piece starts with a double bar line and a repeat sign. The notation includes eighth and sixteenth notes, with some beamed sixteenth notes. A first ending bracket is shown below the first measure.

Example 15



Musical notation for Example 15, a bass line in 4/4 time. The tempo is marked as ♩ = 78. The key signature has two sharps (D major or F# minor). The piece starts with a double bar line and a repeat sign. The notation includes eighth and sixteenth notes, with some beamed sixteenth notes. A first ending bracket is shown below the first measure.

Example 16



Musical notation for Example 16, a bass line in 4/4 time. The tempo is marked as ♩ = 78. The key signature is natural (C major). The piece starts with a double bar line and a repeat sign. The notation includes eighth and sixteenth notes, with some beamed sixteenth notes. A first ending bracket is shown below the first measure.

Example 17



Musical notation for Example 17, a bass line in 4/4 time. The tempo is marked as ♩ = 78. The key signature has two flats (B-flat major or D-flat minor). The piece starts with a double bar line and a repeat sign. The notation includes eighth and sixteenth notes, with some beamed sixteenth notes. A first ending bracket is shown below the first measure.

Example 26

$\text{♩} = 90$

1 *f* *p* *f* *p*

5 *mf* *f*

9 *mf* *f*

13 *f* *f*

Example 27

Rock

$\text{♩} = 100$

1

5

Example 34

Jazz
♩ = 110

1

5

9

13

Fine

17

21

25

29

D. C. al Fine

Example 36

Bossa Nova

♩ = 94

1

5

9

13

Soli

17

21

25

29

Example 39

Funk

$\bullet = 76$

1

3

STINNETT

Detailed description: This block contains the musical notation for Example 39. It is a funk piece in 4/4 time with a tempo of 76 bpm. The key signature has three sharps (F#, C#, G#). The notation is written in bass clef. Measure 1 starts with a double bar line and repeat sign, followed by a series of eighth and sixteenth notes with slurs. Measure 3 continues the pattern with similar rhythmic figures and rests. A large, semi-transparent watermark 'STINNETT' is overlaid across the middle of the page.

Example 40

Funk

$\bullet = 76$

1

3

MUSIC

Detailed description: This block contains the musical notation for Example 40. It is a funk piece in 4/4 time with a tempo of 76 bpm. The key signature has three sharps (F#, C#, G#). The notation is written in bass clef. Measure 1 starts with a double bar line and repeat sign, followed by eighth notes and rests. Measure 3 continues the pattern with eighth notes and rests. A large, semi-transparent watermark 'MUSIC' is overlaid across the middle of the page.

Example 41

Funk

$\bullet = 76$

1

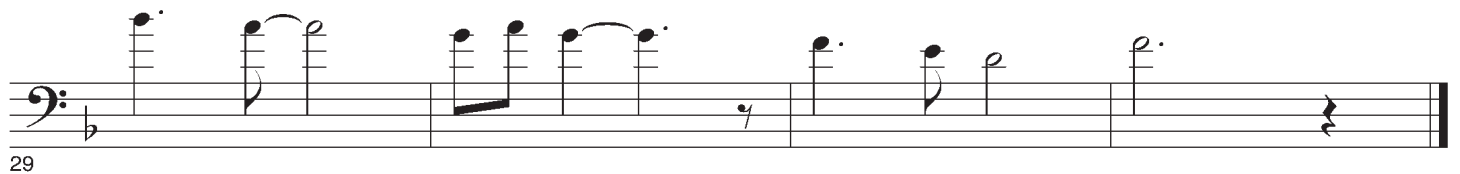
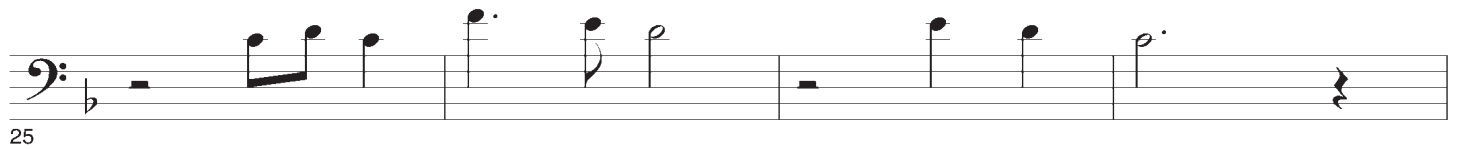
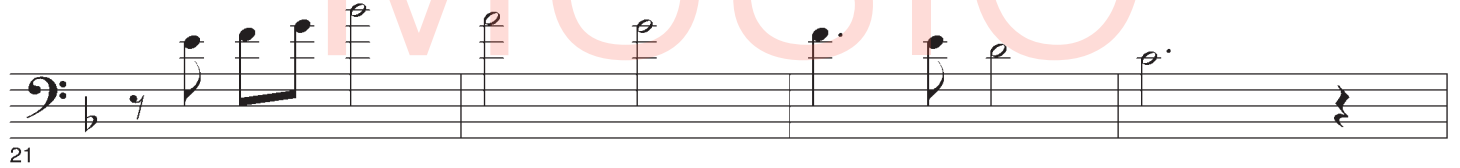
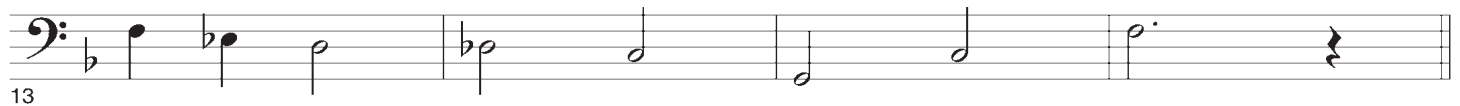
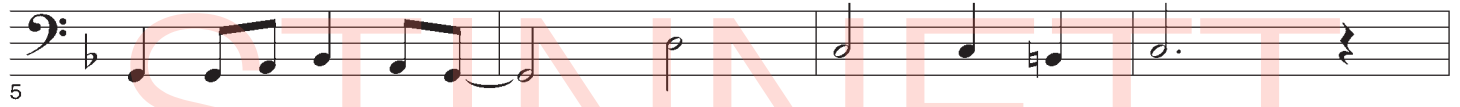
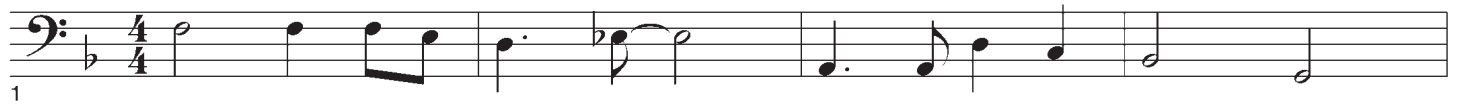
3

Detailed description: This block contains the musical notation for Example 41. It is a funk piece in 4/4 time with a tempo of 76 bpm. The key signature has three sharps (F#, C#, G#). The notation is written in bass clef. Measure 1 starts with a double bar line and repeat sign, followed by eighth notes and rests. Measure 3 continues the pattern with eighth notes and rests.

Example 49

Contemporary Christian - Pop

♩ = 98



Example 63

♩ = 120

1

5

9

13

Example 64

♩ = 120

1

p *f*

5

pp

9

13

f *p* *f* *p*